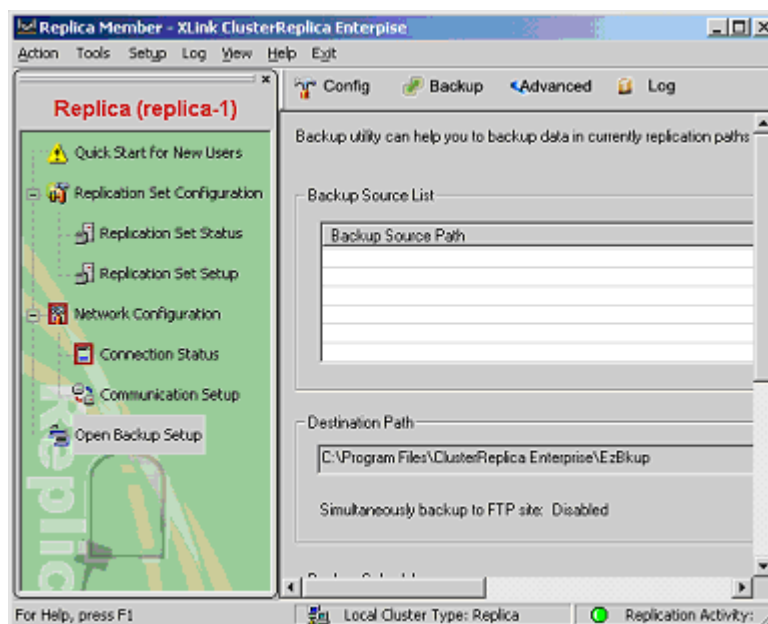


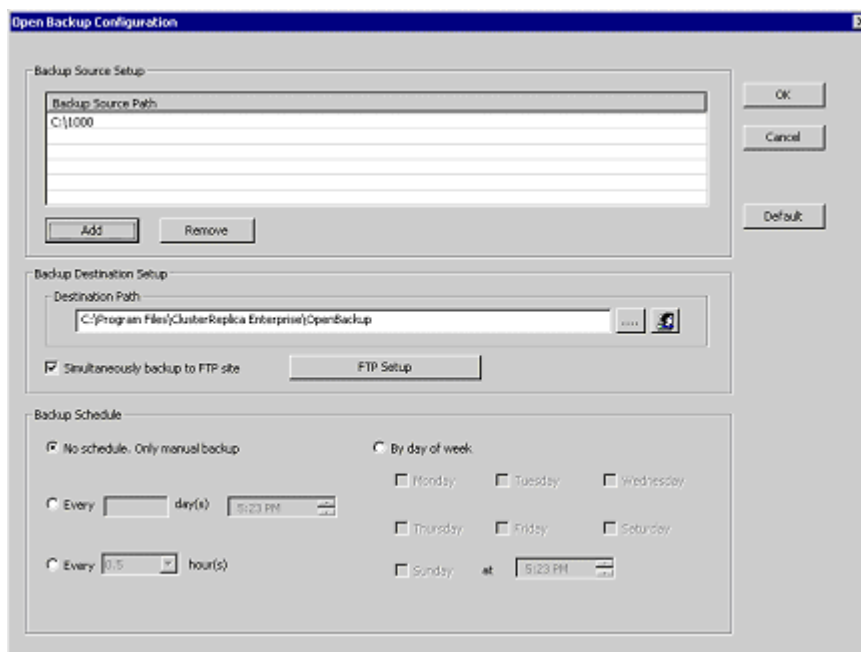
Open File Backup

ClusterReplica Enterprise includes a scheduled Open File Backup utility for users to backup files, from the **replica** member stations only, to a system for complete backup. Besides the traditional method of backup, this backup can also backup via FTP method to backup across the internet.

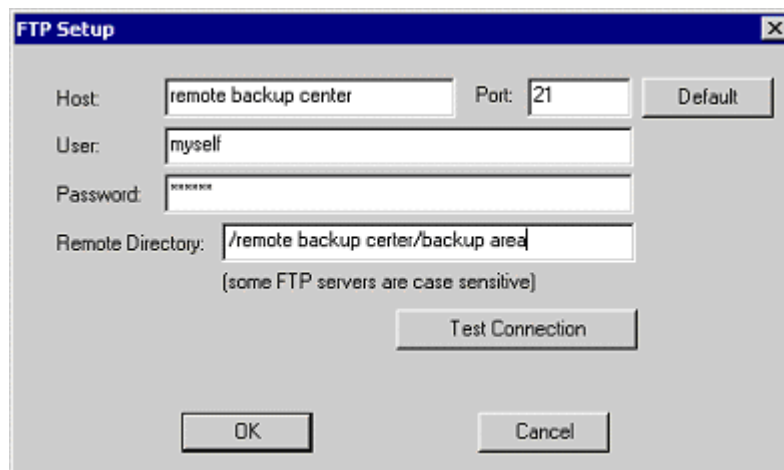
Select **Open File Backup** from the main menu on a **replica** member station to get the configuration panel up on the right-hand side.



Click button **Config** on the tool bar to bring up the configuration screen. Add the file paths to the source and destination lists and select the desired scheduling method and time.



If FTP is to be used for backup, check the **backup to FTP site** box and set the FTP server configuration in its dialog box.



Host: remote backup center Port: 21 Default

User: myself

Password: *****

Remote Directory: /remote backup center/backup area
(some FTP servers are case sensitive)

Test Connection

OK Cancel

The **Backup Schedule** is set by default on **No schedule. Only manual backup.** With this setting, the backup will run only using the FTP method. If scheduled backup is also needed, select other radio buttons for the time of scheduling.

Click **OK** when the configuration is completed.